

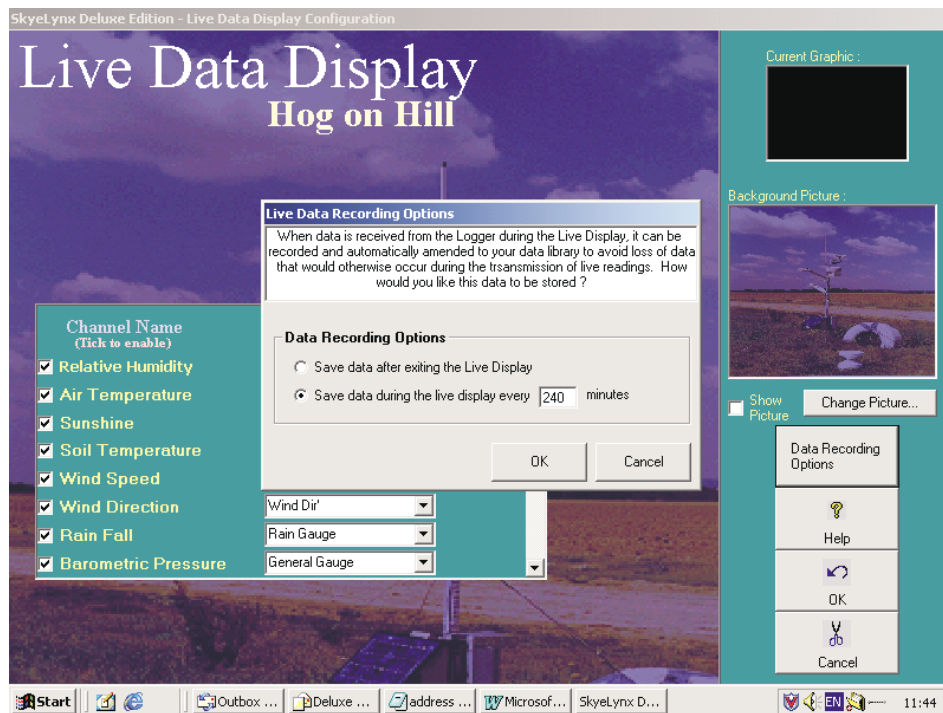


# MINIMET

## Settings for continuous Live Display

If you require Live Display to be on continuously, we advise the following settings:

1. From the Main SkyeLynx Deluxe blue screen, choose Settings and Configure Live Display.
2. Click on the button Data Recording Options to show the view seen below:



3. Click to highlight the button Save Data During the Live Display Every and enter a time (in minutes) in the box. E.g. in the example above, readings displayed in the Live Display will be stored to the PC hard disk every 4 hours.
4. Click OK

In this mode, data will be added to the Day File stored in the folder C:\SKYEDATA every 4 hours. The data format will be the same as the logger's Logging Interval, so if the logger is set up to record every 30 minutes, then 8 x 30 minute measurements will be automatically saved to hard disk every 4 hours.

**SKYE INSTRUMENTS LTD**  
21, Ddole Enterprise Park, Llandrindod Wells, Powys, LD1 6DF, UK  
Tel: +44(0)1597 824811 Fax: +44(0)1597 824812  
Email: [skyeemail@skyeinstruments.com](mailto:skyeemail@skyeinstruments.com) Web: [www.skyeinstruments.com](http://www.skyeinstruments.com)

