



MINIMET

SKYELYNX DELUXE

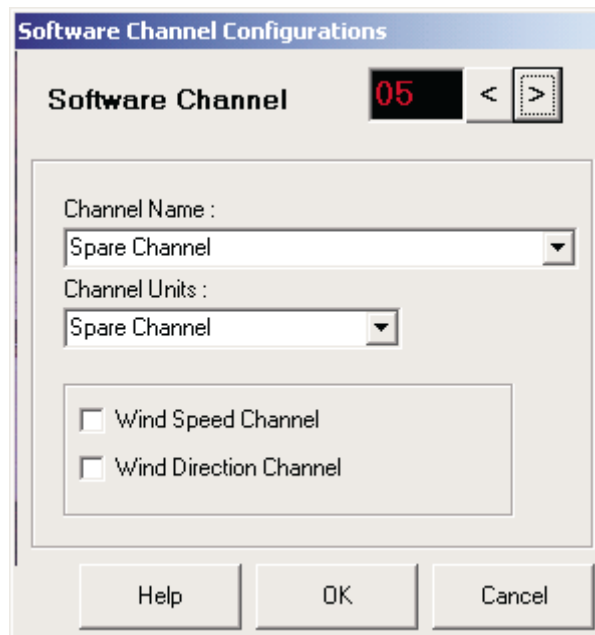
Graphing with blank channels in the Instrument Profile

SkyeLynx Deluxe is designed to graph from a DataHog2 or MiniMet2 datalogger, whatever combination of Software Channels it has in the logger configuration. The Deluxe software uses the Software Channel number to identify the required parameter to graph or summarise, and is able to graph combinations of channels, even if they have been logged at different time intervals.

If the datalogger has been set up with 'dummy' channels, e.g. to allow extra 'warm up' excitation time for Relative Humidity and Air temperature sensors, it is important to include these dummy channels in the Instrument Profile configuration of SkyeLynx Deluxe.

You must type something in the 'Channel Name' of the Instrument Profile, e.g. 'Spare Channel', 'Unused channel' etc. If the Channel Name is left blank, SkyeLynx Deluxe assumes there are no further channels assigned to this logger, and ignores any subsequent entries.

So if you are having problems graphing from any channel which is configured after any 'dummy channels', please check the entries in the Instrument Profile.



SKYE INSTRUMENTS LTD
21, Ddole Enterprise Park, Llandrindod Wells, Powys, LD1 6DF, UK
Tel: +44(0)1597 824811 Fax: +44(0)1597 824812
Email: skyeemail@skyeinstruments.com Web: www.skyeinstruments.com

