

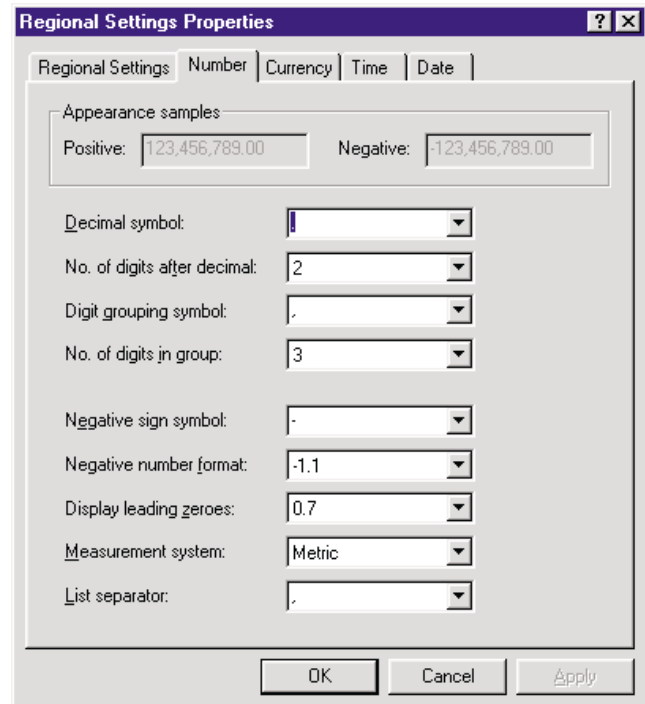
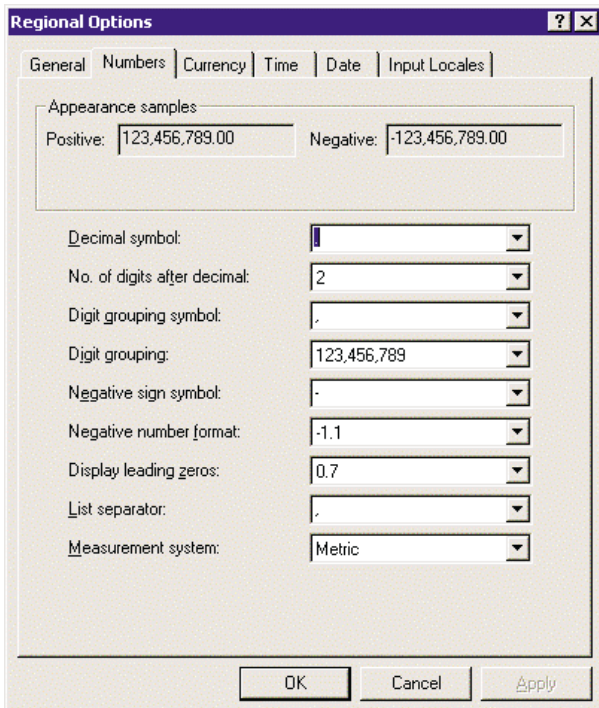
MINIMET

Date Format Problems

If you are getting 'Run Time' errors when trying the graph data or create data summaries, it is likely that your PC settings are at fault. SkyeLynx Deluxe uses dates and time in the British English format, i.e. HH:mm:ss (24 hour) and DD/MM/YYYY.

To check the settings on your PC and change them to the British English format, please follow these instructions (please note that the menus are slightly different in different versions of Windows, but the principles are the same):

1. Click START, Settings and Control Panel.
2. Double click the Regional Settings icon
3. Under the General or Regional Settings tab (depending on your version of Windows), choose the location as English (United Kingdom) or English (British)
4. Under the Numbers tab, choose the options shown below as appropriate:

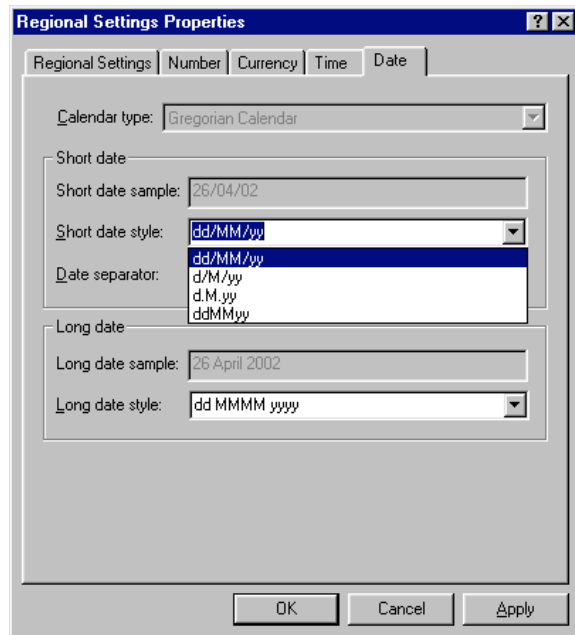
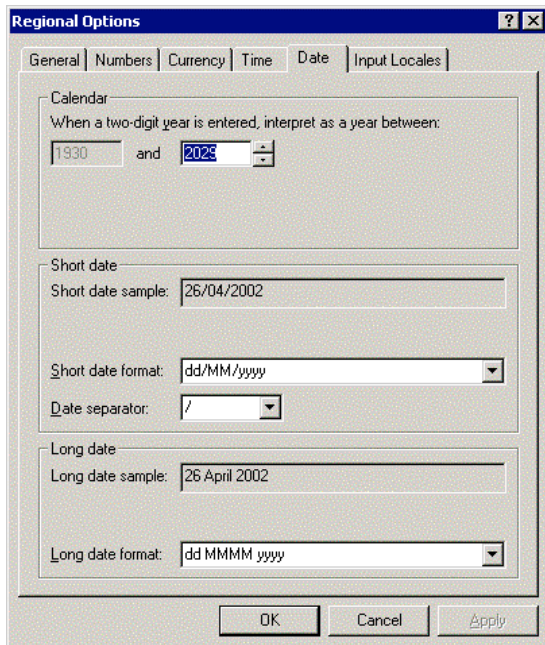


5. Under the Time tab, choose the settings format HH:mm:ss (not hh:mm:ss) and the separator as a colon (:).

SKYE INSTRUMENTS LTD
21, Ddole Enterprise Park, Llandrindod Wells, Powys, LD1 6DF, UK
Tel: +44(0)1597 824811 Fax: +44(0)1597 824812
Email: skyeemail@skyeinstruments.com Web: www.skyeinstruments.com



6. Under the Date tab, choose the settings as below as appropriate:



7. Under the tab called Input Locales (if appropriate) choose input language EN English (United Kingdom).

When you have checked all these settings, shut down the computer and then restart to convert to the new settings. Now retry graph and data summaries in SkyeLynx Deluxe, hopefully no more errors will occur.