

SKYE INSTRUMENTS LIMITED

21 Ddole Enterprise Park, Llandrindod Wells, Powys, LD1 6DF UK

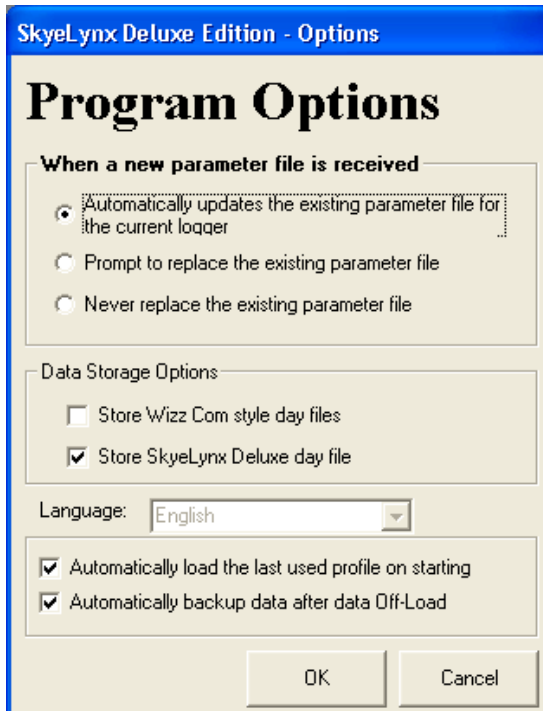
Tel: +44 (0) 1597 824811 Fax: +44 (0) 1597 824812

Email: skyemail@skyeinstruments.com Web: <http://www.skyeinstruments.com>

SKYELYNX DELUXE

SkyeLynx Deluxe has some Program Options for the user to choose when setting up a new installation. The options below are advised as suitable for most users.

Start the SkyeLynx Deluxe software, click on the Settings menu and choose Program Options. You will see the screen below:



PARAMETER FILE - AUTOMATIC UPDATE OPTION

When various tasks are performed using this software, most notably data file Off-Load, a parameter file is downloaded from the logger. This parameter file is used when configuring your instrument, sorting data after a live display etc. The file contains various information about the logger such as Sample and Logging times, The Datafile Identifier, etc. It is recommended that you always have the latest parameter file on your PC, such that when a task requires to use these parameters, we can be sure that the latest (and therefore actual) parameters from the logger are being used.

DATA STORAGE – SKYELYNX DELUXE OPTION

When the DataHog logger is automatically downloaded using SkyeLynx Deluxe, data can be stored in a choice of formats. To use the graphing & summarising facilities in SkyeLynx Deluxe, you need to tick the option to store SkyeLynx Deluxe dayfiles.

AUTOMATIC OPTIONS

The first button will automatically select the last used Instrument Profile every time the program starts. This is useful if you are only using one profile, or if you are use one profile much more than any others.

The second (last) button will automatically save a back up copy of the logger memory (as one composite ASCII file) folder "C:\LynxDelx\Backups". Data is also saved as usual as 24 hour day files in the folder "C:\SkyeData".