

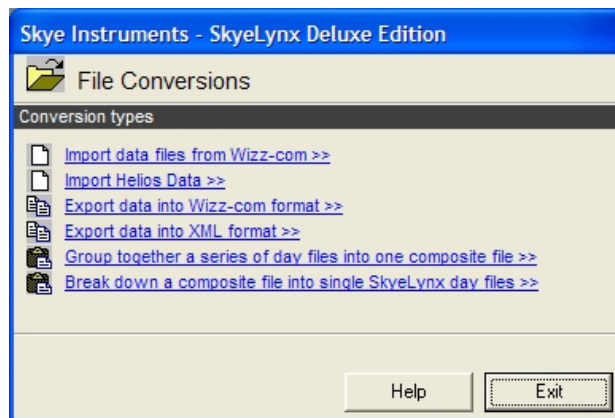


MINIMET

SkyeLynx Deluxe - Data Management

Please follow these suggestions for managing the data downloaded from your DataHog2 or MiniMet2 logger:

1. If the data has been downloaded using SkyeLynx Auto, then it will be stored in 2 places on the PC hard drive:
 - a) the folder C:\LYNXAUTO\FILES will contain a Composite or 'total memory dump' file created at each download
 - b) the folder C:\SKYEDATA will contain Day Files for each 24 hours of data. These will be in 2 formats, one for use by the Skye WizzCom software, the second for use by SkyeLynx Deluxe
WizzCom format is DDMMYY12.345
Deluxe format is YYYYMMDD123456xxxx.txt
(Where the logger's DataFile Identifier is 12345xxxxtxt)
2. If the data has been downloaded using SkyeLynx Deluxe, then it may also be stored in 2 places on the PC hard drive:
 - c) the folder C:\LYNXDELX\BACKUPS will contain the Composite or 'total memory dump' file created at each download (but only if the Program Option feature Automatically backup Data after Download has been ticked)
 - d) the folder C:\SKYEDATA will contain Day Files for each 24 hours of data (in SkyeLynx Deluxe format only, see above)
3. Data can be easily converted between formats and file types using the File Conversion function, found in the File menu of the main blue SkyeLynx Deluxe window.



4. Use the File Conversions functions if you wish to convert the Day File format from the older WizzCom format to SkyeLynx Deluxe format, or vice versa. Data from Helios loggers can also be imported.
5. Use the Composite Files functions to manage archive data and for moving to other PCs etc.
 - a) Group together day files to create single composite files, ready for archive or transfer, e.g. group day files from 1st to 31st Jan to a single monthly composite file. Composite files will be saved in the C:\SKYEBACK folder
 - b) Break down composite files back to day files. This can be used to restore previously archived composite files, or to create day files from back up files in C:\LYNXAUTO\FILES

SKYE INSTRUMENTS LTD
21, Ddole Enterprise Park, Llandrindod Wells, Powys, LD1 6DF, UK
Tel: +44(0)1597 824811 Fax: +44(0)1597 824812
Email: skyeemail@skyeinstruments.com Web: www.skyeinstruments.com

