



WATER & AIR

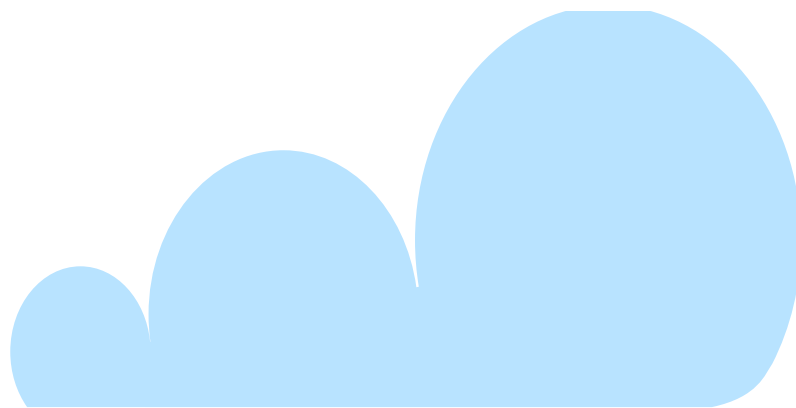
Relative Humidity Calibration

Skye Instruments relative humidity calibration facility uses the saturated salt solution method, performed in a temperature controlled environment. This is a well documented and proven method for such calibrations.

Calibration is made at two humidities, 1% and 75.4% and each sensor is issued with a calibration certificate. Skye Instrument's probes are adjustable, bringing the instruments back within original specifications when recalibrated. Recalibrated probes are also issued with figures showing the probe's readings before adjustment.

A additional NAMAS traceable calibration check can also be made if required, using NAMAS calibrated salts solutions at 49.7% and 79% RH.

Skye Instruments relative humidity probes read the full 0-100% RH range with a $\pm 2\%$ accuracy.



SKYE INSTRUMENTS LTD
21, Ddole Enterprise Park, Llandrindod Wells, Powys, LD1 6DF, UK
Tel: +44(0)1597 824811 Fax: +44(0)1597 824812
Email: skyeemail@skyeinstruments.com Web: www.skyeinstruments.com

