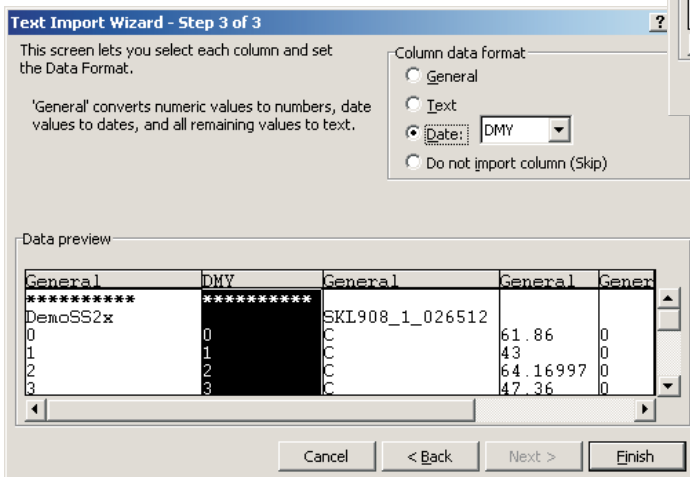
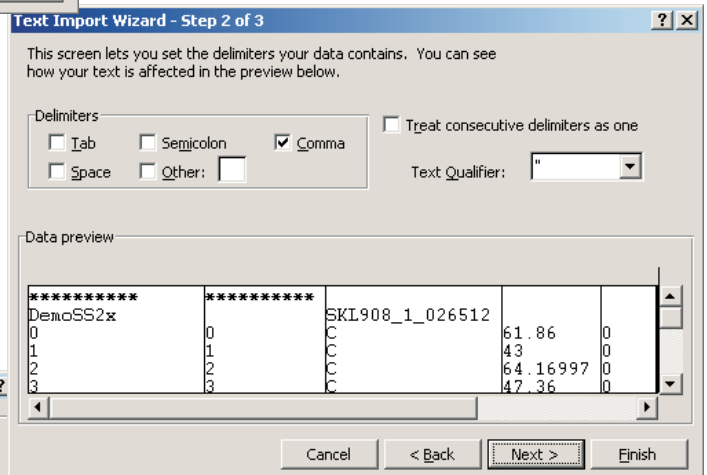
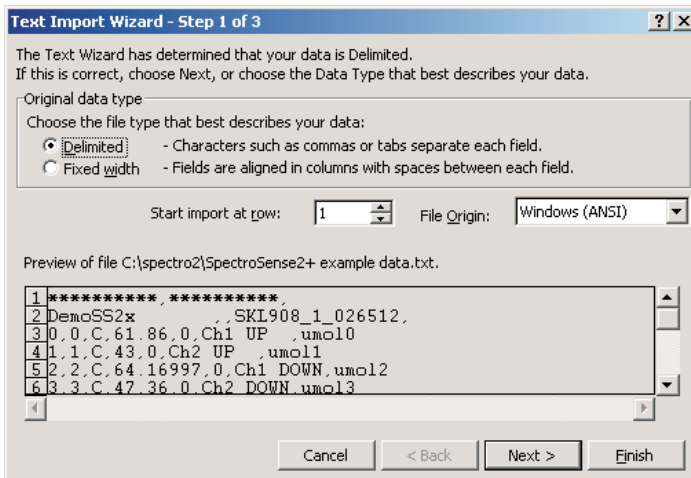




LIGHT

SpectroSense2+ Importing data into Excel

1. Open Excel. Click File, Open and choose the file offloaded from your SpectroSense2+ meter.
 2. Go through the Text Import Wizard steps 1 to 3.
- Step 1 choose Delimited file type and click Next.
Step 2 choose the Comma delimiter (not Tab) and click Next.
Step 3 - Click Finish



The data is now in columns in Excel ready to graph etc as usual.

SKYE INSTRUMENTS LTD
21, Ddole Enterprise Park, Liandrindod Wells, Powys, LD1 6DF, UK
Tel: +44(0)1597 824811 Fax: +44(0)1597 824812
Email: skyeemail@skyeinstruments.com Web: www.skyeinstruments.com

