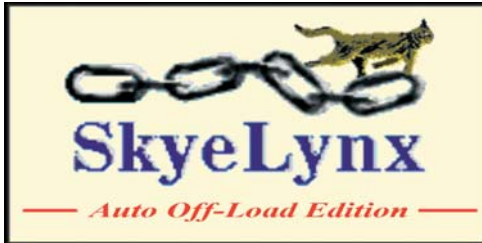
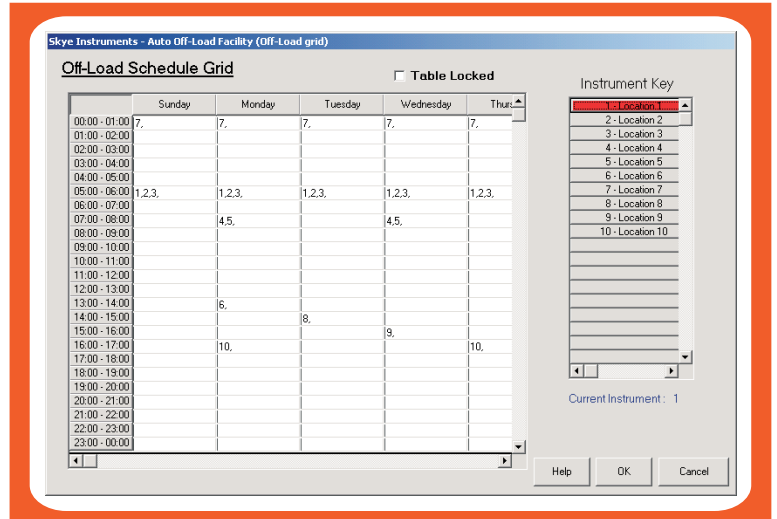




MINIMET



SkyeLynx Auto Software



For DataHog2 and MiniMet2 dataloggers



Automatic dial up during off peak hours



Suitable for loggers connected by modem or cable link



Sister program to SkyeLynx Deluxe Graphing & summarising software



Automatic data download saves time by the user



Data format compatible with Microsoft Excel

SkyeLynx Auto enables automatic data download, unmanned or unattended, from a DataHog2 or MiniMet2 logger connected by a hard wire link, standard telephone line or cellular modem.

There are two main advantages, firstly convenience and a saving of operator time. The PC can automatically download data from the logger system at set intervals so that the user can have up to date information at their fingertips.

Secondly, if the logger is connected via a modem link,

SkyeLynx Auto can be set to download during off peak hours making significant savings in call charges.

A network of up to 25 dataloggers can be accessed automatically from a single PC, all settings, telephone numbers etc are stored in individual Instrument Profiles.

Data downloads can be organised in combinations of hourly, daily or weekly intervals. A choice of formats for data storage is possible, a numerical ASCII format compatible with Word and Excel, or

formats suitable for direct use with Skye's graphical packages SkyeLynx Deluxe and its predecessor WizzCom.

SkyeLynx Deluxe contains full datalogger configuration and download functions and also provides powerful facilities for tabulating and summarising the data, including graphing with a special windrose feature. Please request a datasheet for further details on the SkyeLynx Deluxe software.



SKLS 940 SKYELYNX AUTO SOFTWARE

PC Operating System	Windows 95 / 98 / 2000 / NT / XP Professional / Vista
Minimum PC Specification	496 processor 8 Mb RAM 10 Mb Hard Disk Space VGA monitor
Recommended PC Specification	Pentium 2 processor or better 32 Mb RAM 10 Mb Hard Disk Space SVGA monitor Quality hardware modem (not a budget software modem). Modem must be internal or serial interface. Modem used exclusively for Lynx Auto. Multi-use modem sharing with other softwares, e.g. internet and fax is not recommended PC should be switched on 24 hours to allow automatic dial up at any time.
Instrument Profiles	The program allows the user to create 25 unique instrument profiles, each one containing details on a DataHog / MiniMet system. Each profile contains the connection details for the station - e.g. phone, Cable link (Direct to Com Port), phone / pager numbers if required, and the logger's Datafile Identifier.
Data Downloading	Data is taken off the logger in binary format to allow for quick Data Transfer and hence minimise the time spent on-line to the logger.
Downloading Options	The user can set up the time and day for regular automatic downloading of the 25 instrument profiles. Hourly, Daily, or Weekly downloading options can be chosen, a maximum of 5 stations can be downloaded in any one hour. The Test Offload function allows manual data download at any time.
Data Format	All data is stored in a space delimited ASCII format. A single file of the complete downloaded data is always stored as a back up. The user can also choose to store the data in 24 hour 'day files' which are compatible with the Skye graphing packages SkyeLynx Deluxe and WizzCom.

SKYE INSTRUMENTS LIMITED

21, Ddole Enterprise Park, Llandrindod Wells, Powys, LD1 6DF, United Kingdom

Tel: +44 (0) 1597 824811 Fax: +44 (0)1597 824812

Email: skyemail@skyeinstruments.com Web: <http://www.skyeinstruments.com>